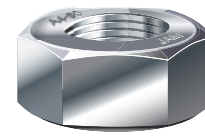
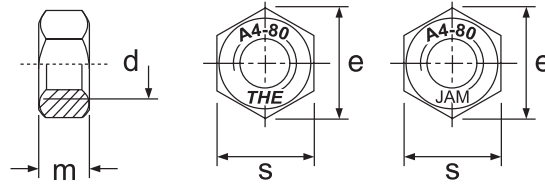


Stainless Steel Grade A2-70 / A4-80

Hexagon Nut



A4 S.S.

Stainless Steel

Material Standard : ISO 3506 Part 2:1997

Specification: DIN 934

Material (Item No.): A2-70 (40413)
A4-80 (40418)

Ordering example : A4-80 stainless steel M20 hexagon nut (item no.: 4041820000)

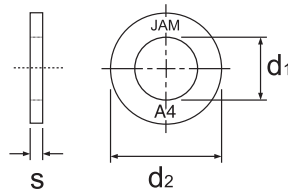
d (diameter)	M3	M4	M5	M6	M8	M10	M12	M14	M16	M18	M20	M22	M24	M27*	M30*	M33*	M36*	M39*
Thread Pitch/mm	0.5	0.7	0.8	1	1.25	1.5	1.75	2	2	2.5	2.5	2.5	3	3	3.5	3.5	4	4
s (max. width across flats)/mm	5.5	7	8	10	13	17	19	22	24	27	30	32	36	41	46	50	55	60
s (min. width across flats)/mm	5.32	6.78	7.78	9.78	12.73	16.73	18.67	21.67	23.67	26.16	29.16	31	35	40	45	49	53.8	58.8
e (min. width across corners)/mm	6.01	7.66	8.79	11.05	14.38	18.9	21.1	24.49	26.75	29.56	32.95	35.03	39.55	45.2	50.85	55.37	60.79	66.44
m (max. thickness)/mm	2.4	3.2	4	5	6.5	8	10	11	13	15	16	18	19	22	24	26	29	31
m (min. thickness)/mm	2.15	2.9	3.7	4.7	6.14	7.64	9.64	10.3	12.3	14.3	14.9	16.9	17.7	20.7	22.7	24.7	27.4	29.4
size	M3	M4	M5	M6	M8	M10	M12	M14	M16	M18	M20	M22	M24	M27	M30	M33	M36	M39
Item No.	03000	04000	05000	06000	08000	10000	12000	14000	16000	18000	20000	22000	24000	27000	30000	33000	36000	39000

Diameter above M39 / other standard on request

*According to ISO 3506 Part 1:1997, the mechanical properties above M24 subject of agreement

Stainless Steel Grade A2(304) / A4(316)

Flat Washer



A4 S.S.

Stainless Steel

Material Standard : BS 6105:1981

Specification : BS 4320:1968

Material (Item No.) : A2 stainless steel, Form A (40511)
A4 stainless steel, Form A (40512) A4 Stainless steel, Form C (40513)

Ordering example : A4 stainless steel M20 flat washer form A (item no.: 4051220000)

Form A Diameter	M3	M4	M5	M6	M8	M10	M12	M14	M16	M18	M20	M22	M24	M27	M30	M33	M36	M39
d ₁ (max. inside diameter) / mm	3.4	4.5	5.5	6.7	8.7	10.9	13.4	15.4	17.4	19.5	21.5	23.5	25.5	28.5	31.6	34.6	37.6	40.6
d ₁ (min. inside diameter) / mm	3.2	4.3	5.3	6.4	8.4	10.5	13.0	15.0	17.0	19.0	21	23	25	28	31	34	37	40
d ₂ (max. outside diameter) / mm	7	9	10	12.5	17	21	24	28	30	34	37	39	44	50	56	60	66	72
d ₂ (min. outside diameter) / mm	6.7	8.7	9.7	12.1	16.6	20.5	23.5	27.5	29.5	33.2	36.2	38.2	43.2	49.2	55.0	59.0	65.0	71.0
s (max. thickness) / mm	0.6	0.9	1.1	1.8	1.8	2.2	2.7	2.7	3.3	3.3	3.3	3.3	4.3	4.3	4.3	5.6	5.6	6.6
s (min. thickness) / mm	0.4	0.7	0.9	1.4	1.4	1.8	2.3	2.3	2.7	2.7	2.7	2.7	3.7	3.7	3.7	4.4	4.4	5.4
Form C Diameter	M6	M8	M10	M12	M14	M16	M18	M20	M22	M24	M27	M30	M33	M36	M39			
d ₁ (max. inside diameter) / mm	6.7	8.7	10.9	13.4	15.4	17.4	19.5	21.5	23.5	25.5	28.5	31.6	34.6	37.6	40.6			
d ₁ (min. inside diameter) / mm	6.4	8.4	10.5	13.0	15	17	19	21	23	25	28	31	34	37	40			
d ₂ (max. outside diameter) / mm	14	21	24	28	30	34	37	39	44	50	56	60	66	72	77			
d ₂ (min. outside diameter) / mm	13.6	20.5	23.5	27.5	29.5	33.2	36.2	38.2	43.2	49.2	55	59	65	71	76			
s (max. thickness) / mm	1.8	1.8	2.2	2.7	2.7	3.3	3.3	3.3	3.3	4.3	4.3	4.3	5.6	5.6	6.6			
s (min. thickness) / mm	1.4	1.4	1.8	2.3	2.3	2.7	2.7	2.7	2.7	3.7	3.7	3.7	4.4	4.4	5.4			
size	M3	M4	M5	M6	M8	M10	M12	M14	M16	M18	M20	M22	M24	M27	M30	M33	M36	M39
Item No.	03000	04000	05000	06000	08000	10000	12000	14000	16000	18000	20000	22000	24000	27000	30000	33000	36000	39000

Diameter above M39 / other standard on request