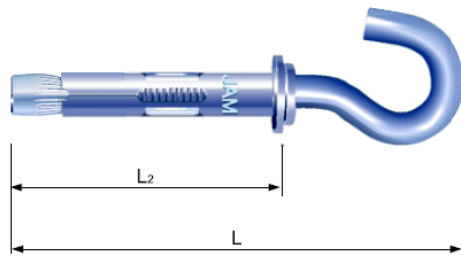


JAM-SC Steel Zinc Plated Sleeve Anchor



Application

- suspensions from concrete ceiling, scaffolding

Material

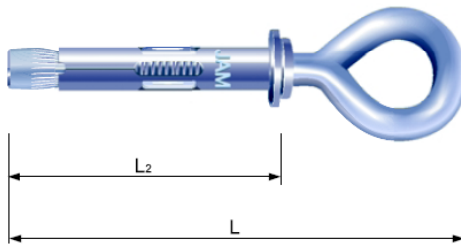
- steel, zinc plated ≥ 5µm;

Base material

- concrete
(Non-cracked concrete $f_{cc} = 30N/mm^2$)

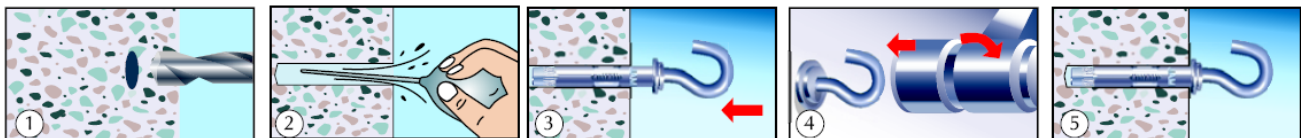
Item No.	Description	Bore x Hole Depth d ₀ x h ₁ (mm)	Thread Size x L (L ₂) (mm)	Setting Depth h _s (mm)	Tightening Torque T _{inst} (Nm)	Fixture Thickness t _{ix} (mm)	Base Material Thickness (mm)	Safe Working Load (kN)
2010406040	SC 8 x 48	8 x 55	M6 x 78 (48)	40	10	0	80	0.20
2010408050	SC 10 x 60	10 x 65	M8 x 100 (60)	50	25	0	100	0.40

JAM-SE Steel Zinc Plated Sleeve Anchor



Item No.	Description	Bore x Hole Depth d ₀ x h ₁ (mm)	Thread Size x L (L ₂) (mm)	Setting Depth h _s (mm)	Tightening Torque T _{inst} (Nm)	Fixture Thickness t _{ix} (mm)	Base Material Thickness (mm)	Safe Working Load (kN)
2010506040	SE 8 x 48	8 x 55	M6 x 78 (48)	40	10	0	80	0.40
2010506070	SE 8 x 70	8 x 75	M6 x 100 (70)	62	10	0	80	0.40
2010508050	SE 10 x 60	10 x 65	M8 x 100 (60)	50	25	0	100	0.60
2010508080	SE 10 x 80	10 x 85	M8 x 117 (80)	70	25	0	100	0.60

Installation of JAM-SC, JAM-SE Steel Sleeve Anchor



1. Drill to specified diameter and depth.
2. Clean the hole with blow-out bulb.
3. Push anchor carefully with hand into hole until the washer are flush with concrete.
4. Tighten with wrench to the recommended torque value.